



NEW

CENALED SPOT Flexarm

Focused, versatile and robust

The CENALED SPOT flexible arm brings light to every workplace. It is also suitable for use in machine tools and the lighting of workbenches. The flexible LED luminaire with a coated, oil-resistant flexible arm and safety glass in front of the LED chips cuts a fine figure even in rough manufacturing plant conditions. Equipped with a screw-on base and optional magnetic plate, the CENALED SPOT can also be used quickly wherever light is needed.

The Technology

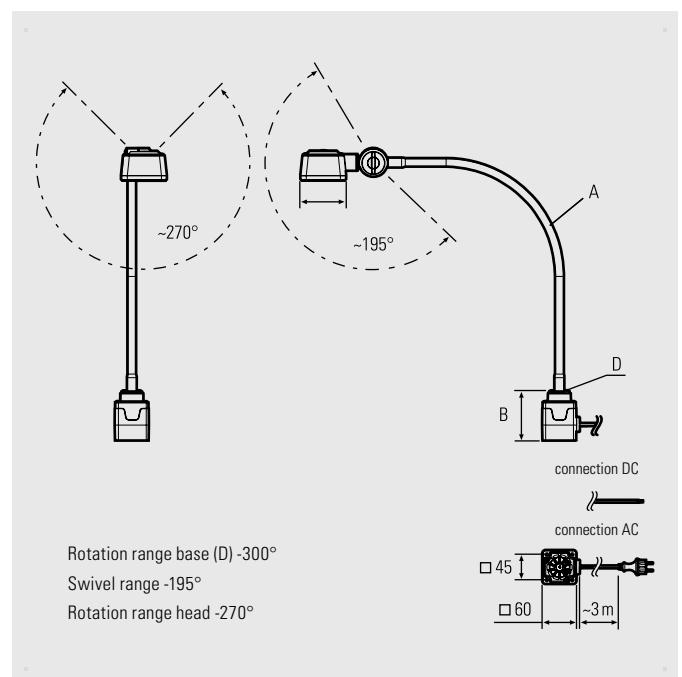
- High-performance LED chips for 5 000K neutral white
- ON / OFF and dimmable using buttons on the lamp head
- A 500 mm long high-quality gooseneck - highly flexible, tested for 20,000 bending cycles and with oil-resistant coating
- It is also supplied in a 24V DC variant or in a variant for direct connection to 100-305V AC, each with a 3 m lead

Your benefits

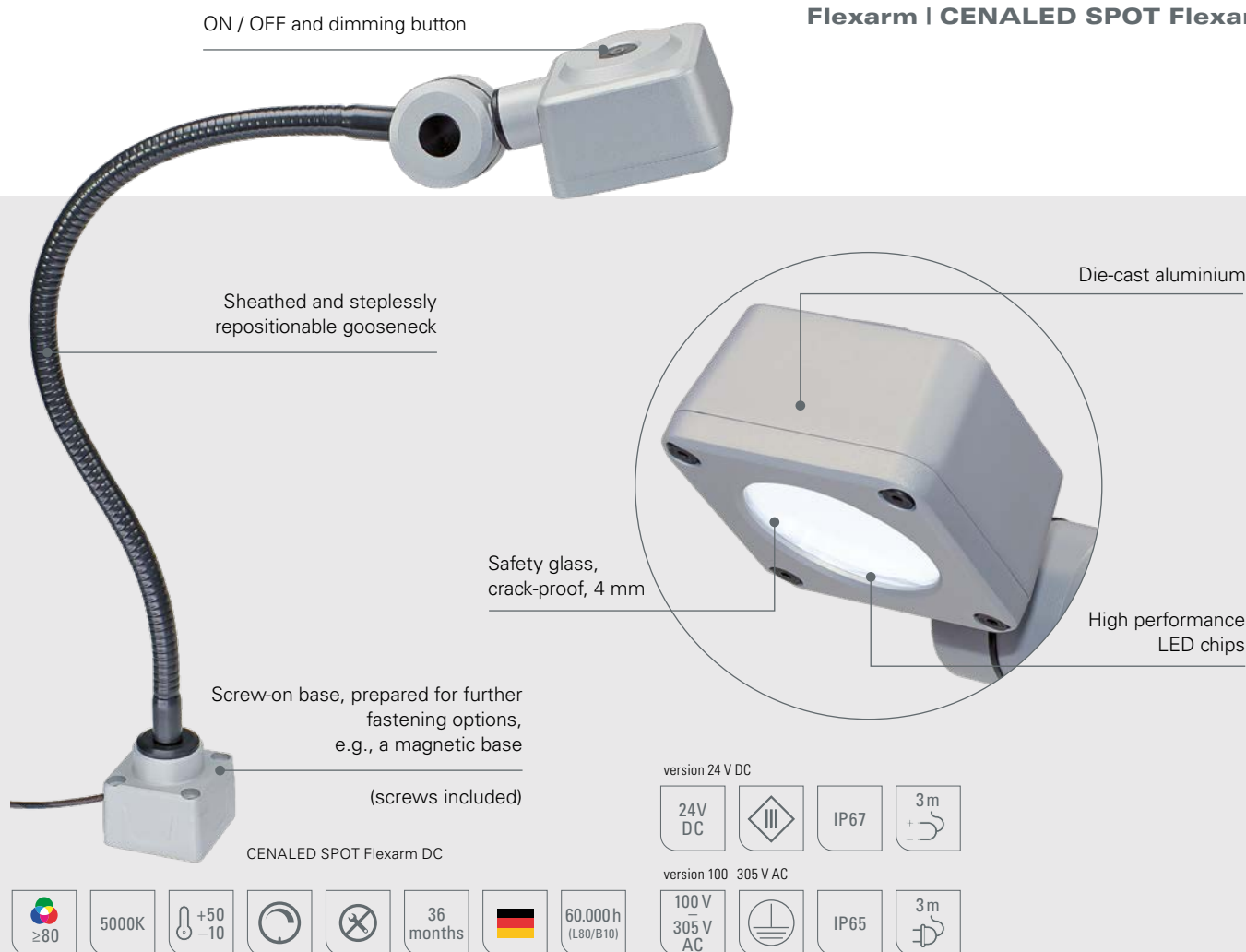
- Compact luminaires for bright illumination in neutral white and with a high level of detailed sharpness
- Can be precisely aligned using the gooseneck
- 30° beam angle for focused illumination

Areas of application

- Workplaces at machines and equipment without their own lighting, such as drilling machines, cutting machines or injection moulding machines, if local or direct lighting is required



Flexarm | CENALED SPOT Flexarm



CENALED SPOT Flexarm	Product no.	Length of arm (A)	Base (B)	Optics	E _{max} *	Lamp luminous flux	Output	Connection
CENALED SPOT Flexarm DC, screw-on base	121012-01	500 mm	59 mm	30°	9212 lx	1120 lm	~8,5 W	24V DC
CENALED SPOT Flexarm AC, screw-on base	121012-11	500 mm	88 mm	30°	9212 lx	1120 lm	~9 W	100-305V AC

Power supply, dimmboxes and connection materials, see Accessories.

* maximum lighting intensities, measurement area 100 cm x 100 cm at 50 cm distance

Accessories	Product no.
Holding magnet for CENALED screw-on base	220500-01
Table clamp for CENALED screw-on base	220500-02
Wall bracket for CENALED screw-on base	220500-03

The CENALED SPOT is part of the CENALED modular system. The basic module of every light is the screw-on base for a 24V DC or 100-305 VAC connection. The modular structure is supplemented with an articulated arm, flexible arm or a directly mounted swivel head. The lamp head has an on/off switch and brightness control (dimming).

The screw-on base allows several optional fastening options, for example using a magnetic clamp or a table clamp.

