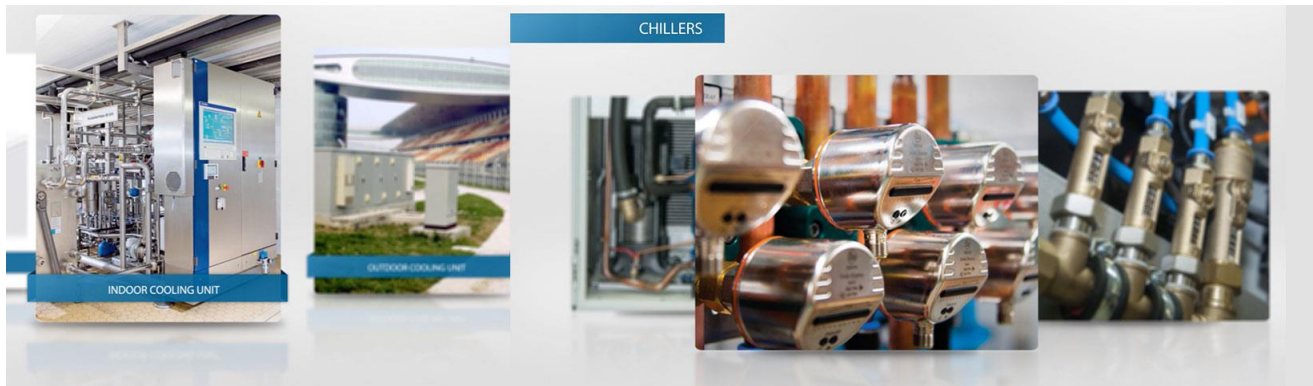




More than 50 years of Thermal Management



KG4268 Design updates

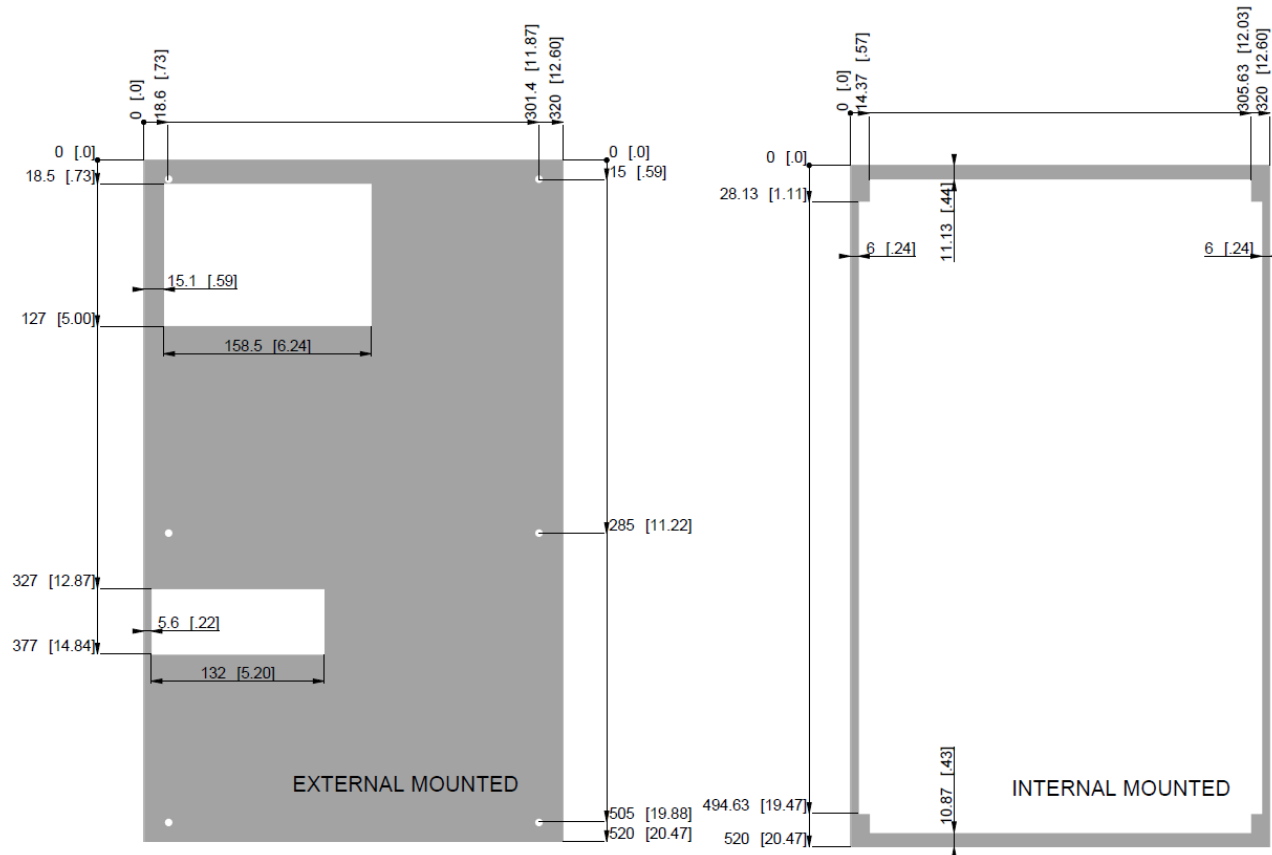
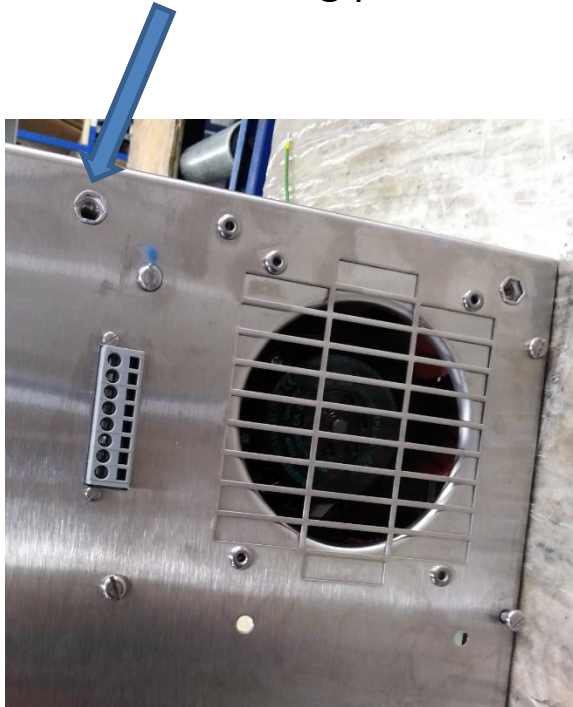
Design improvements scheduled to be implemented on KG4268 by end Q4 2020
These changes have already been applied to units KG4266, KG4269 and KG4267

- 1) Removed fixing points compatible with unit KG4166, cut-out and installation points of KG4268 remain unchanged.
- 2) Cover fixed to housing with 3 screws instead of sliding (different removal and fixing of the cover).
- 3) New connector concept with female connector delivered as part of the accessory bag to be wired for installation of the unit.
- 4) New PCB board with new test sequence
- 5) New drain fitting at the bottom of the unit



1) Removed fixing points compatible with KG4166, cut-out and installation points of KG4268 remain unchanged.

This fixing point will be removed (and the other ones associated with KG4166)



2) Cover fixed to housing with 3 screws instead of sliding (different removal and fixing of the cover).

Please note that

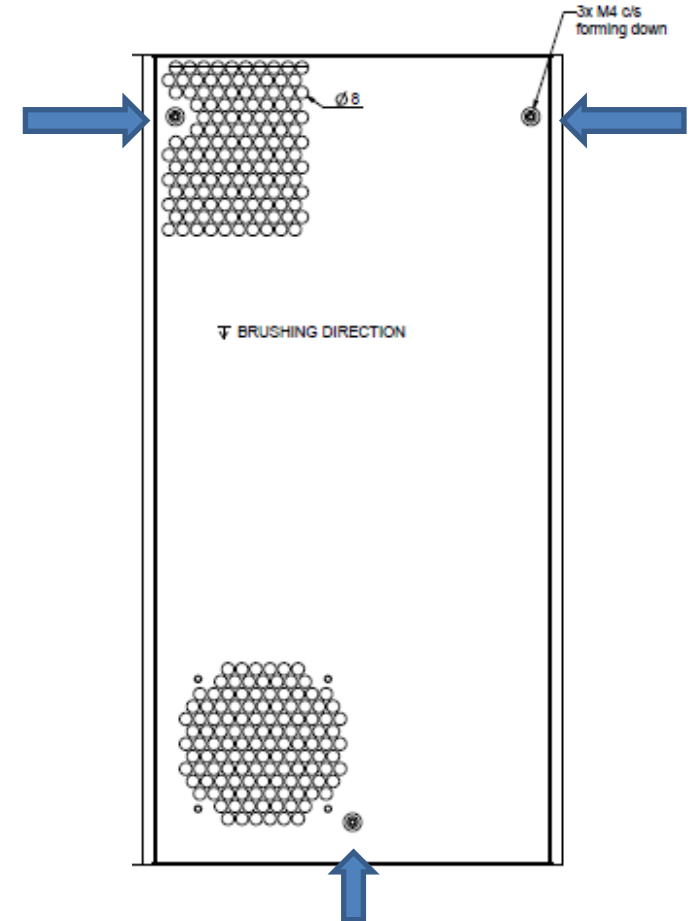
Louvered covers of the current version will not be compatible with this new version

Nema4X covers of the current version will not be compatible with this new version

s/m 5930018050

s/m 59300180502

Make sure to consume any existing stock of these items by the time the new version is going to be introduced.



3) New connector concept with female connector delivered as part of the accessory bag to be wired for installation of the unit.

Current, wires arriving to the unit



Future, male connector integrated on the unit,
female connector on accessory bag to be wired
Unit can be unplugged/disconnected safely
without leaving live wires exposed

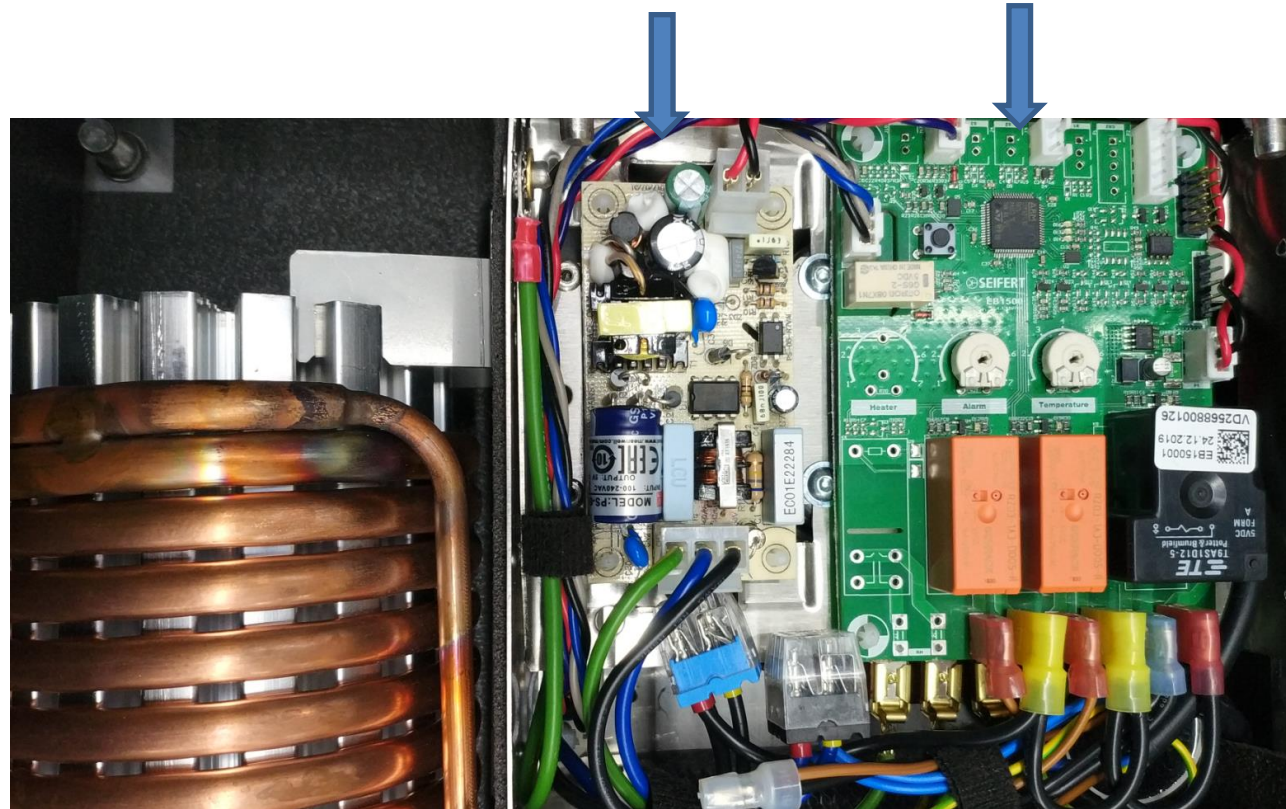


4.1) New PCB board with new test sequence

Control separated from supply

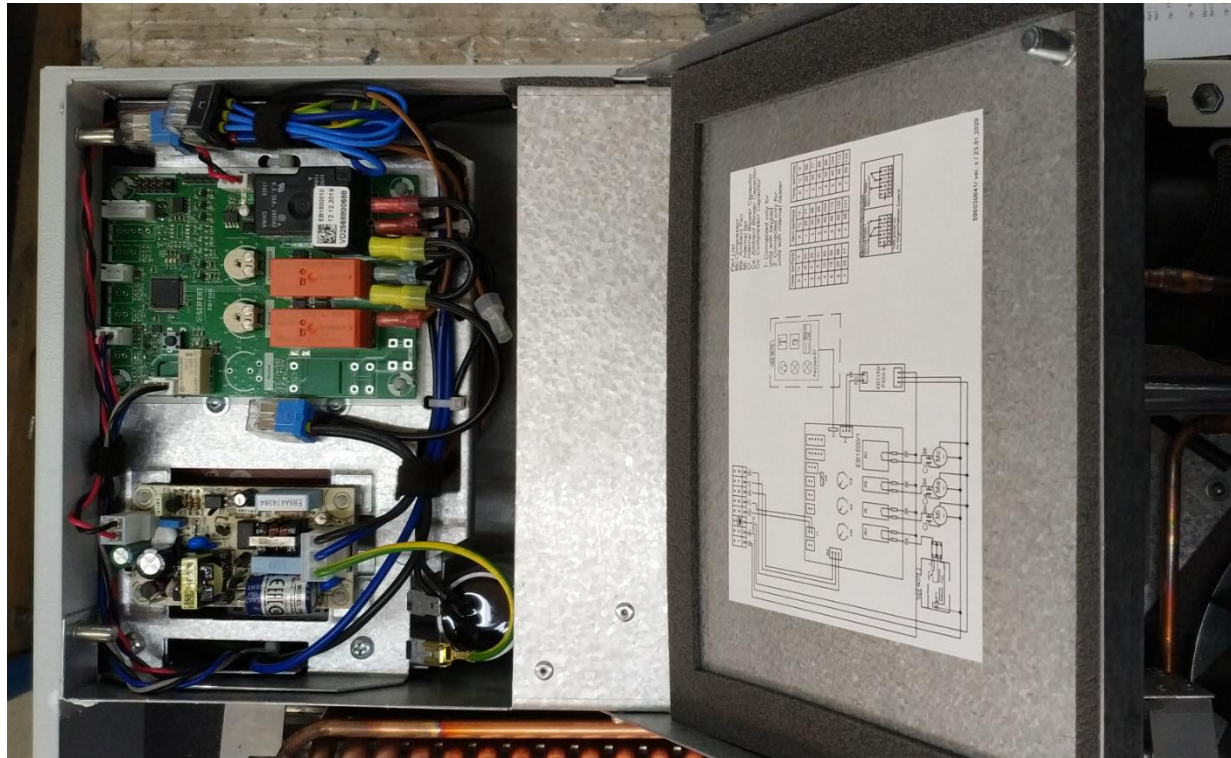
Power supply

EB1500 PCB board

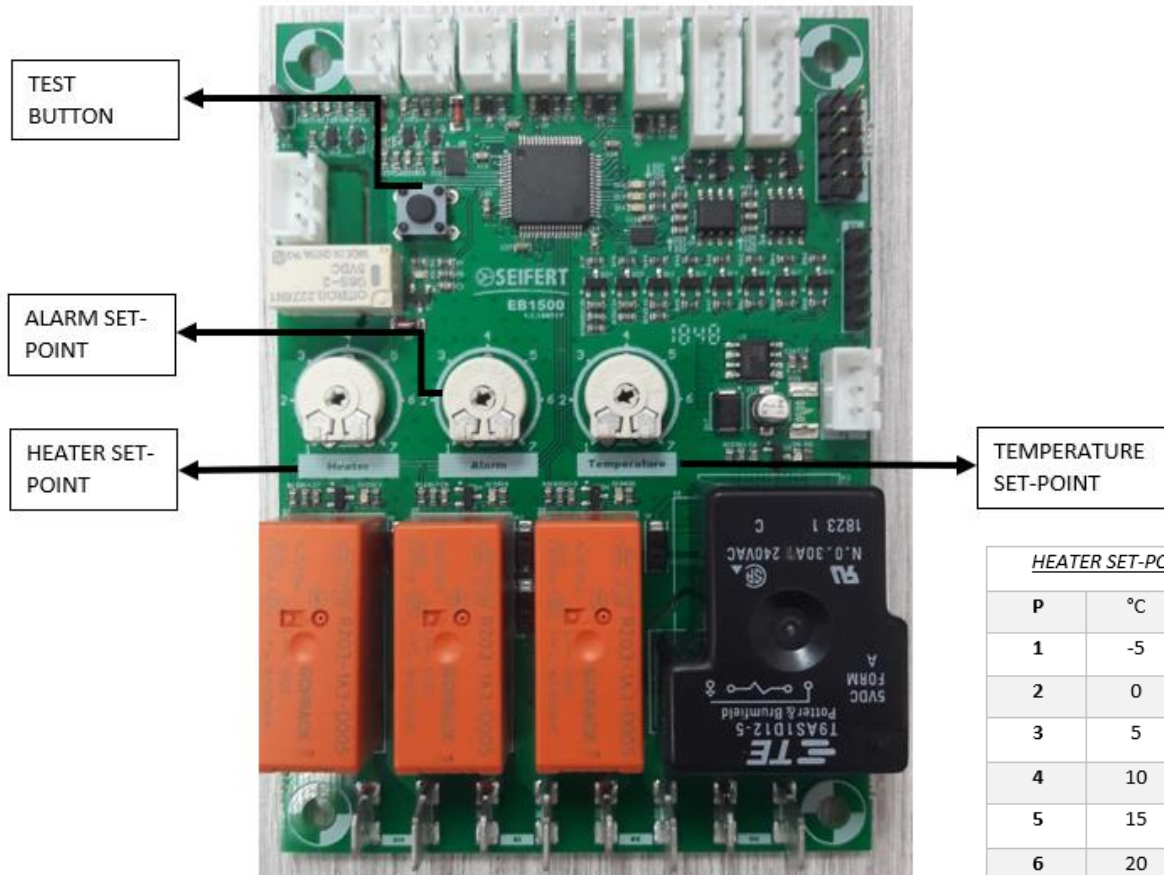


4.2) New PCB board with new test sequence

New access panel, unscrew the top screws and tilt panel rotating on the lower side, open access to PCB and the wiring diagram is on the back of the panel for easy follow up.



4.3) New PCB board with new test sequence



Please follow manual to adjust the setpoints on EB1500, below set points for KG4269 for reference.

<u>HEATER SET-POINT (HS)</u>			<u>ALARM SET-POINT (AS)</u>			<u>TEMP. SET-POINT (CS)</u>		
P	°C	°F	P	°C	°F	P	°C	°F
1	-5	23	1	25	77	1	20	68
2	0	32	2	30	86	2	25	77
3	5	41	3	35	95	3	30	86
4	10	50	4	40	104	4	35	95
5	15	59	5	45	113	5	40	104
6	20	68	6	50	122	6	45	113
7	25	77	7	55	131	7	50	122



4.4) New PCB board with new test sequence

Verifying status of components. When pressing the test button, the unit goes through a test sequence:

Test 1:

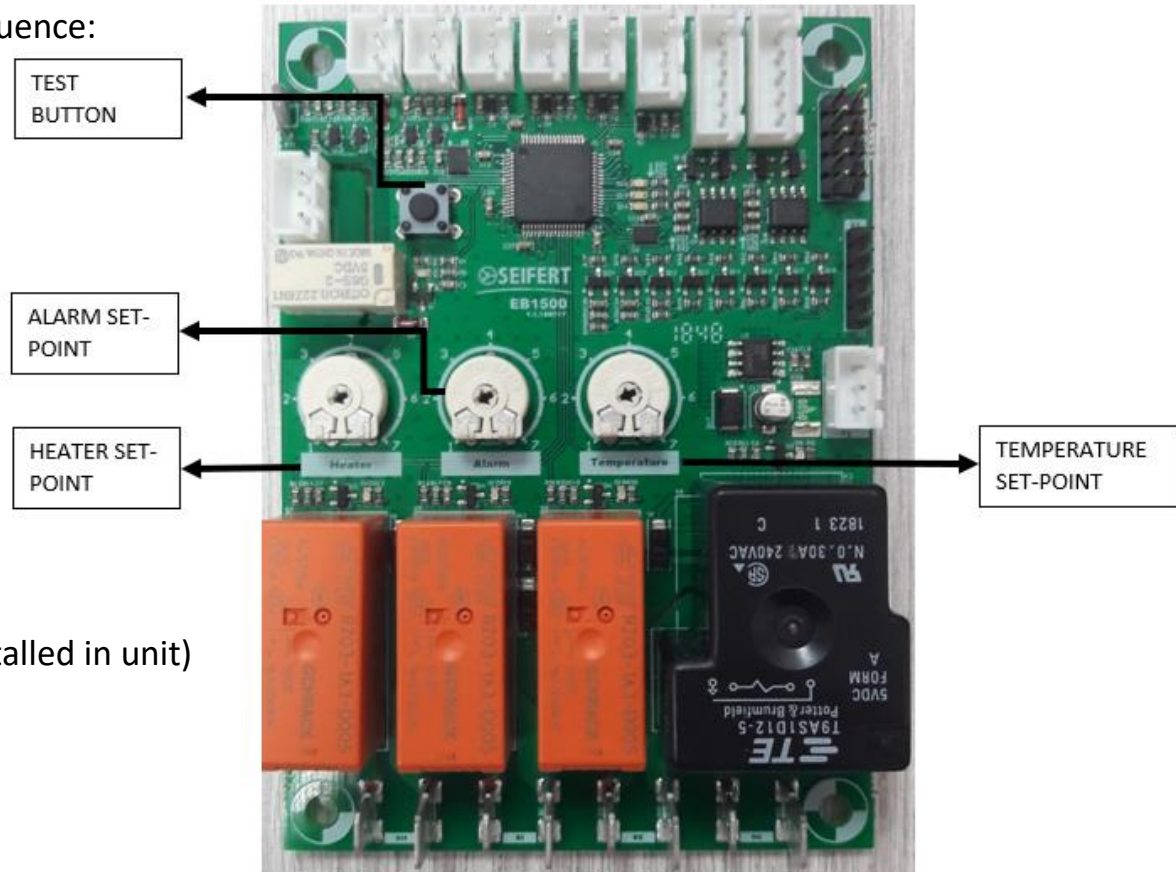
- Compressor ON
- Ambient Blower ON
- Internal Blower ON
- Heater OFF

Test 2:

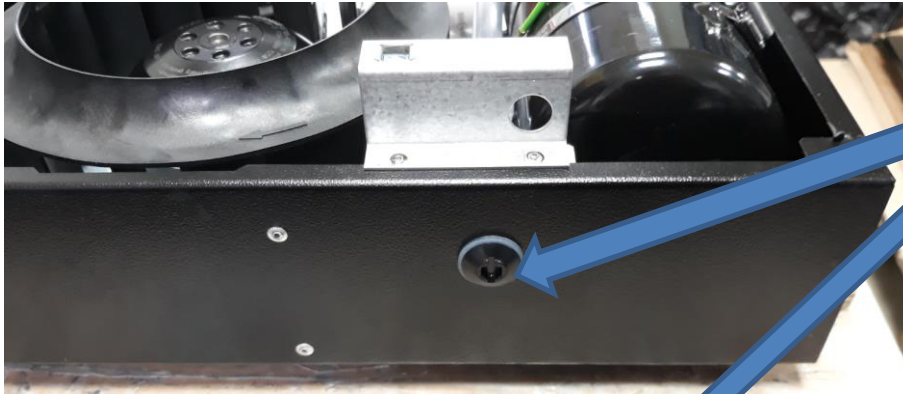
- Compressor OFF
- Ambient Blower ON
- Internal Blower ON
- Heater OFF

Test 3: (Only when internal heater is installed in unit)

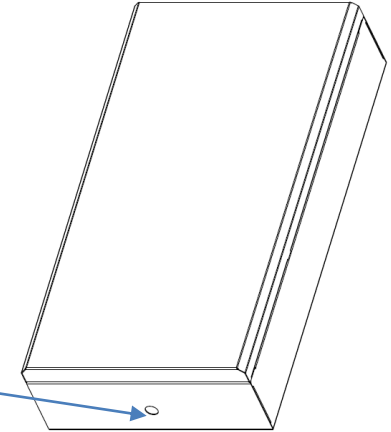
- Compressor OFF
- Ambient Blower ON
- Internal Blower ON
- Heater ON



5.1) New condensation drain, new oil drain



New fitting ,
unit is
delivered in
this condition



Drain location



Condensate
drain Same
location as
current unit
and same
design



5) New condensation drain, new oil drain 5.2) New condensation drain, new oil drain

Follow instructions on manual to install drain fitting

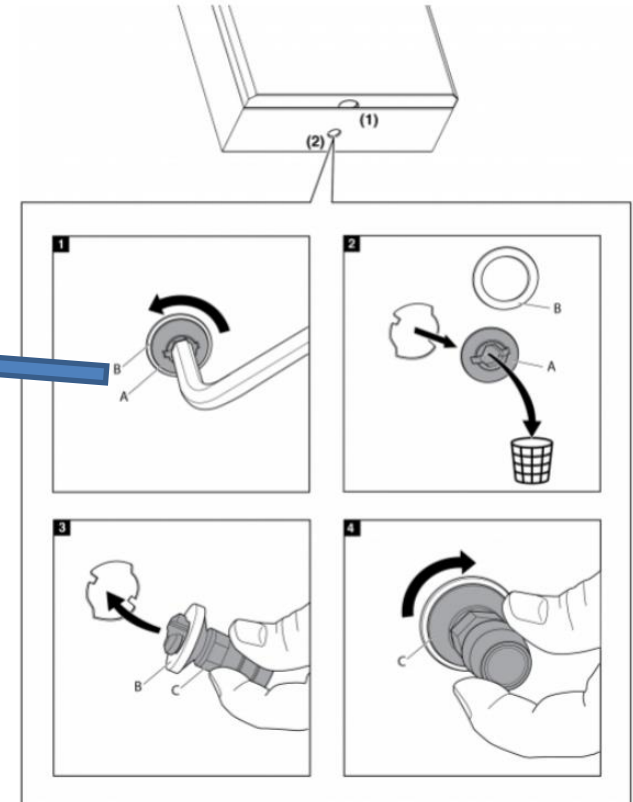


Drain fitting and condensate fitting have the same diameter, only a drain pipe/hose is supplied with the unit



To install a cleaning drain pipe, please follow below steps:

1. Remove the plastic stopper from in the base of the unit (factory setting is locked)
2. Dispose the plastic stopper but keep the Silicon washer
3. Insert the drain connector
4. Lock it clockwise and fix the cleaning pipe onto it



Thank you
for
your attention

