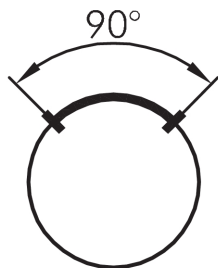
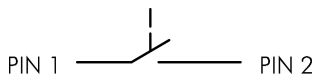
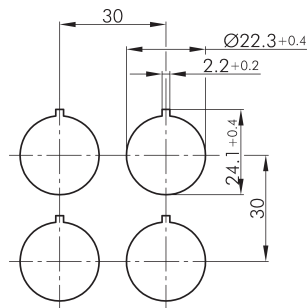
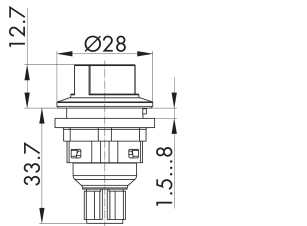




### Selector switch, maintained, with 4-pole M12 connector SWAI\_C007

Description: with integrated 4-pole M12 connector, A-coded

Category: Selector Switches (momentary/maintained)  
 Series: SHORTRON® connect  
 Panel cut-out: Ø 22.3 mm  
 Protection class: II (protective insulation)  
 Degree of protection: IP65 / IP67  
 Switching function: maintained action  
 Illumination: no  
 With labelling option: no  
 Contact equipment: 1NO  
 Connection type: M12 4 poles  
 Front bezel: silver-coloured  
 Shape: round



### Optional accessory



Insulated plastic enclosure, 1 mounting hole D1RL1V-R22



Insulated plastic enclosure, 1 mounting hole D1RL1VGB-R22



Insulated plastic enclosure, 2 mounting holes D1RL2V-R22



Insulated plastic enclosure, 3 mounting holes D1RL3V-R22



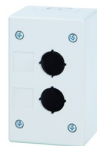
Insulated plastic enclosure, 3 resp. 4 mounting holes D1RL4V-R22



Insulated plastic enclosure, 1 mounting hole IRL1M



Insulated plastic enclosure, 1 mounting hole IRL1M\_GELB



Insulated plastic enclosure, 2 mounting holes IRL2M



Insulated plastic enclosure, 3 mounting holes IRL3M



Insulated plastic enclosure, 5 mounting holes IRL5M



Spacer ring SDR



Insulated plastic enclosure with 1 mounting hole SIL22/1



High insulated plastic enclosure with 1 mounting hole SILH22/1

